

www.ala.org.au

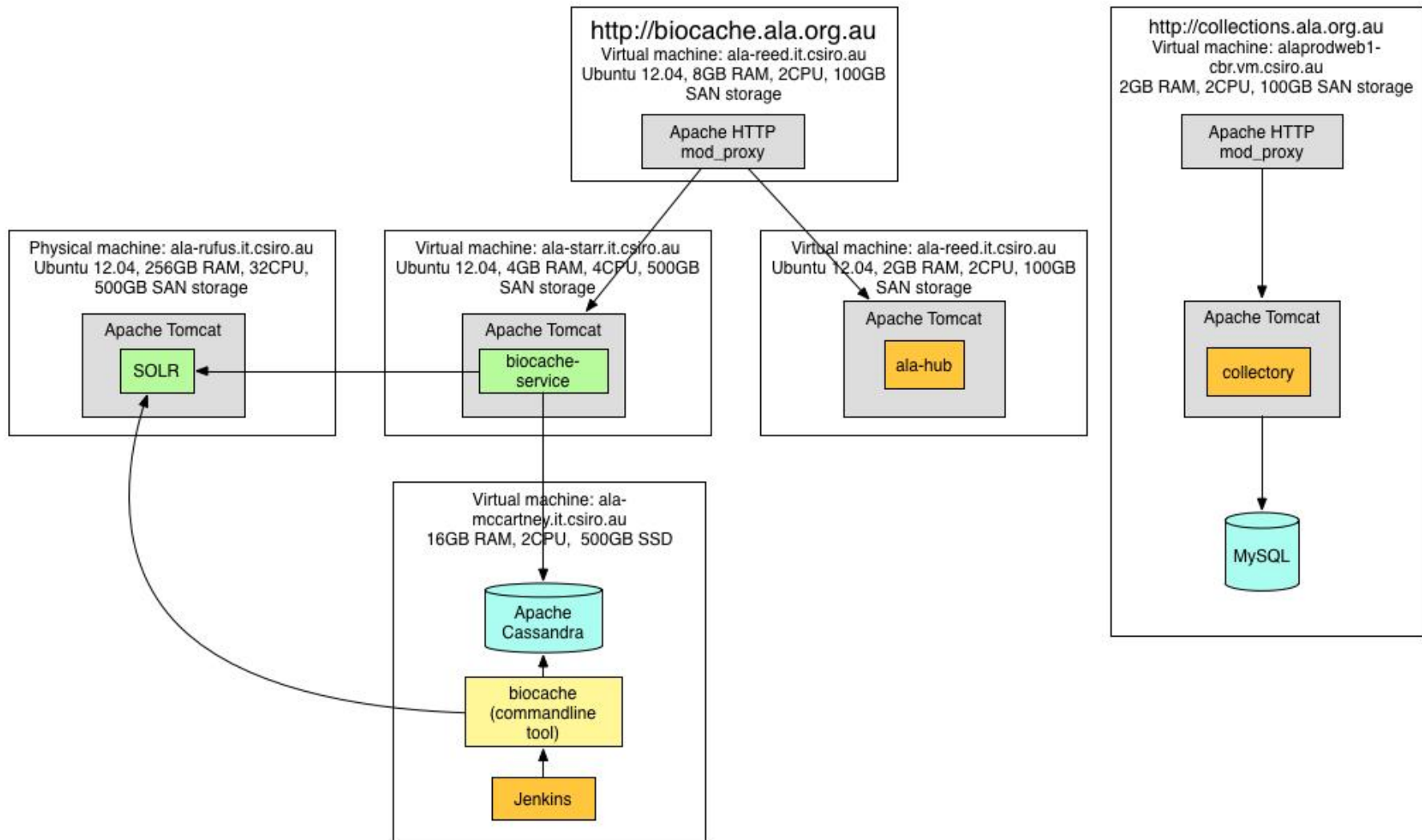
Operation

Paris workshop - May 2015

Dave Martin

Agenda

- Server requirements
- Data management
 - ALA
 - GBIF
- Database backups, index regeneration
- Resourcing



Suggested specifications

- SOLR index server
 - 32GB+ instance, 640GB storage
- Cassandra server
 - 16GB+ instance, SSD is recommended
 - 4CPU, 8 or 16
- Collectory, Biocache services, Hub web app
 - 3 x 4GB instance, 32GB storage
 - 2CPU, Biocache service 4CPU or better

Data management

- ALA
 - Upload DwCA
 - URL endpoints
 - IPT Integration - create data provider
 - Automation - Jenkins
- GBIF
 - Uses GBIF web services

Database backups

- Collectory
 - mysqldump
- Cassandra
 - nodetool snapshot
- Both tools can be ran against live DB

Index regeneration

- biocache commandline tool
 - `“biocache bulk-processor index”`
 - Index generated to `/data/biocache-reindex`
- SOLR admin tool
 - Use to swap between indexes
- Jenkins

Ongoing operation - skills

- Relational DB
- Linux admin
- Familiarity with managing:
 - java apps
 - tomcat
 - apache