



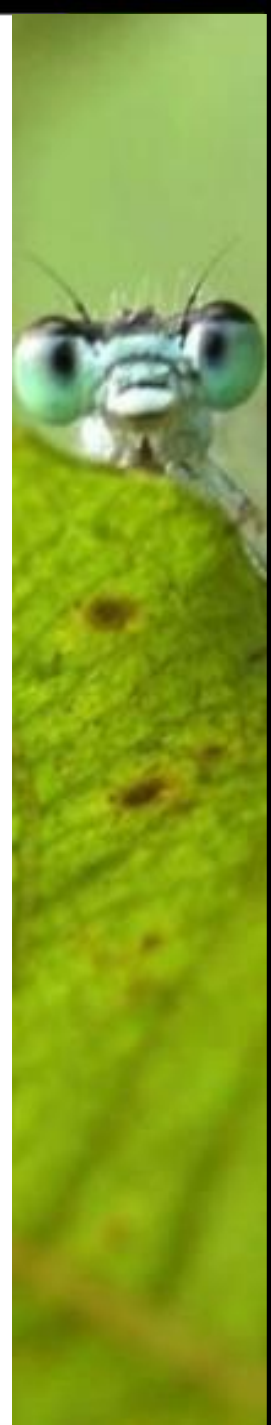
International ALA workshop
3-5 October 2016

Documentation & wiki of ALA

Fabien Caviere
dev@gbif.fr

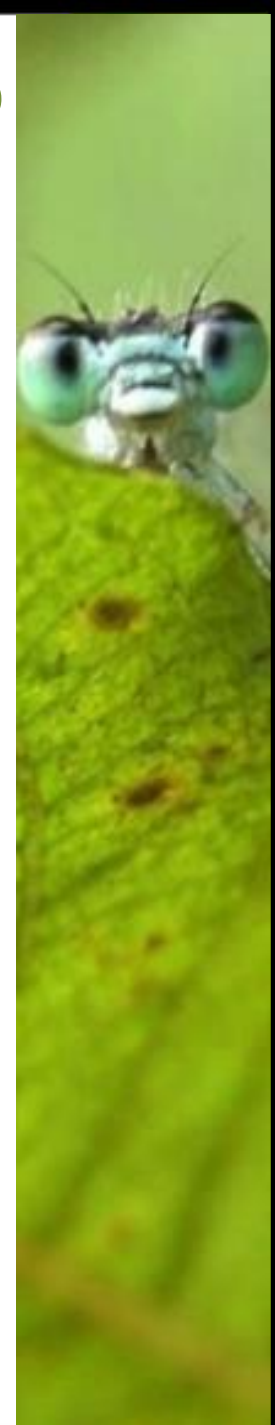
Documentation & GitHub of ALA

- Documentation on the wiki of the ALA GitHub
- CoopBioPlat informations
- The different parts of the ALA GitHub



Documentation on the wiki of the ALA GitHub

Demonstration



CoopBioPlat project

GBIF Nodes of :

Argentina, Brazil, Costa Rica, France, Portugal, Spain,

Cooperate on national biodiversity data portals based on ALA.

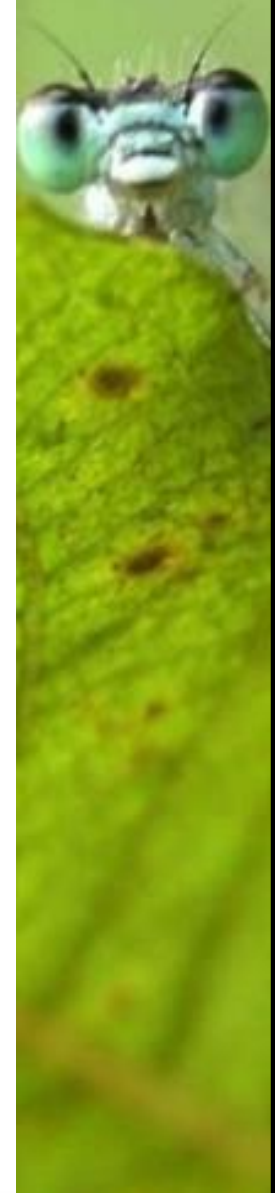
Demonstrate technical cooperation and progress in that area (ALA community).

2 meetings :

June 2015 Buenos Aires

(Argentina)

October 2015 Madrid (Spain)



Encounter Bay

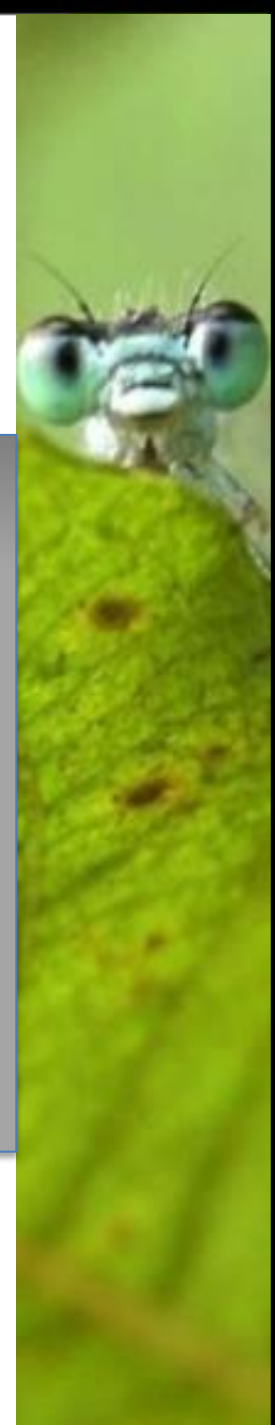
- Key Technical Document in multiple languages :

Atlas of Living Australia **Documento Técnico Chave**

Versão: 1.0.4, 6 Julho 2016

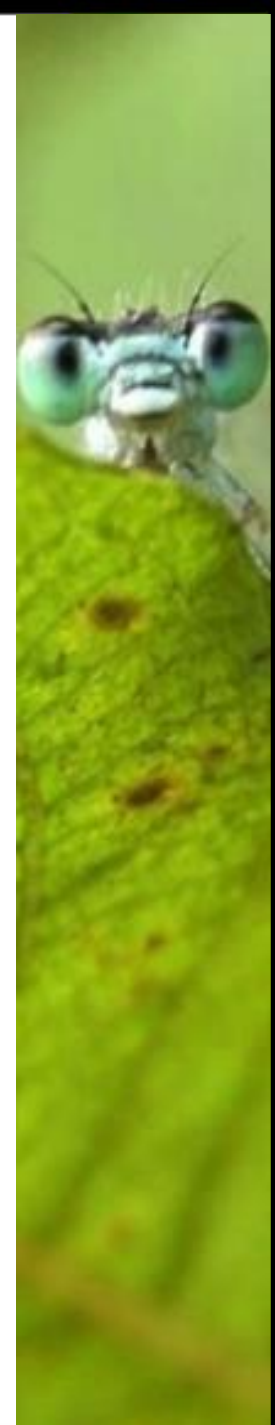
Este documento é uma contribuição do projeto Encounter Bay (ALA node portal internationalization), co-financiado pelos Nós Francês, Espanhol, Português e Belga do GBIF e pelo Secretariado do GBIF através do seu Programa de Suporte ao Aumento de Capacidade.

Available soon on gbif.org



The different parts of the ALA GitHub

- ALA GitHub profile : <https://github.com/AtlasOfLivingAustralia>
- Setup for ALA Demo (Ansible & Vagrant) :
<https://github.com/AtlasOfLivingAustralia/ala-install>
- ALA documentation :
<https://github.com/AtlasOfLivingAustralia/documentation/wiki>
- Biocache-Hub :
<https://github.com/AtlasOfLivingAustralia/generic-hub>
- Collectory-Hub :
<https://github.com/AtlasOfLivingAustralia/collectory-hub>



Documentation & GitHub of ALA

Thank you for your attention

Questions / Talk time

